

# KALON

## SIMPLE BED ASSEMBLY INSTRUCTIONS

### ENTIRELY ORIGINAL. DESIGN FOR A SUSTAINABLE CULTURE.

Made with uncompromising craftsmanship by traditional woodworkers in the USA from 100% sustainably-harvested, solid, domestic wood, the Divan is a celebration of craft and contemporary American woodworking.

The unique character of the natural material is an integral part of the design that will only improve with age and use.

As with all of our pieces, we used the most sustainable materials and methods available. This piece is manufactured in America, upholding the long-standing regional tradition of furniture making and the craftspeople who are a part of it. Designed to be as socially and environmentally responsible as it is beautiful, this piece was built to last for generations of use.

### PIECES INCLUDED

Headboard  
x1 (Optional)



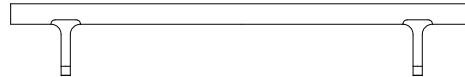
Footboard  
x2 (x1 if using Headboard)



Center Support Rail  
x1 (Full, Queen & King only)



Side Panel  
x2



More fun when done with two people. Even better with an electric screwdriver.

**Step 1 Attaching Hardware** Begin with the Headboard and Footboard. Screw parts B-L into holes along inner face of Headboard and Footboard. Insert parts A2-L into large holes along inner face of Side Panels and outer edge of Center Support Rail (Center Support Rail is for Full, Queen and King only).

**Step 2 Frame Assembly** Place Side Panels against Headboard and Footboard, sliding parts B-L into available holes on ends of Side Panels and into parts A2-L. Please take care to align the through hole in part B-L with the available hole in Part A2-L. Using supplied Small Allen Key, screw parts A1-L into A2-L. Screw until tight.

**Step 3 Attaching Fifth Foot** If assembling Queen or King bed attach Fifth Foot to Center Support Rail using using part E. Using supplied Large Allen Key, screw to tighten. **The Fifth Foot is optional on Full size beds.**

**Step 4 Mattress Slats** Lay Mattress Slats in frame using the available recesses. Using available holes at either end of center mattress slat, screw pocket screws into side rail. Do not over tighten.

Enjoy!

Mattress Slat  
x11



Fifth Foot  
x1 (Full (optional), Queen & King only)



Part A1-L  
x12 (x8 Twin Frame)



Part A2-L  
x12 (x8 Twin Frame)



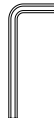
Part B-L  
x12 (x8 Twin Frame)



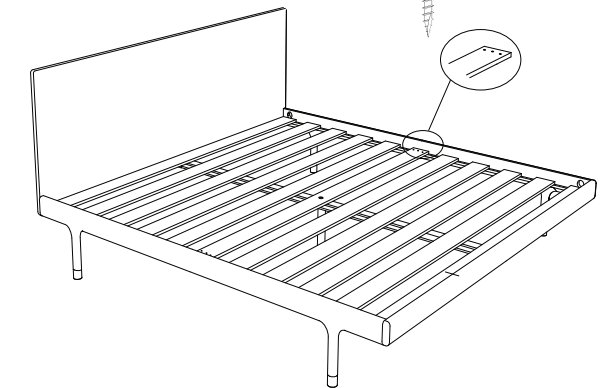
Part E  
x1 (if using Fifth Foot)



Allen Key  
x1 Small  
x1 Large (if using Fifth Foot)



Pocket Screw  
x6



**Caution:** Please use caution when assembling beds with full headboards, as the headboard represents a significant weight. To prevent the bed frame from tipping during assembly, we recommend assembling headboard against a wall. Please continue to use caution after assembly, as the piece may tip without the weight of a mattress. **DO NOT DRAG BED**, dragging the bed will cause damage that is not covered under warranty.