



Stump & Trunk

---

kalon



Large Stump - Maple



Large Stump + Simple Bed - Maple + Ash



Large Stump - Maple



Large Stump - Maple



Large Stump - Maple



Large Stump - Maple





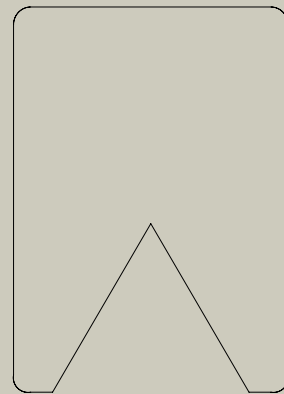
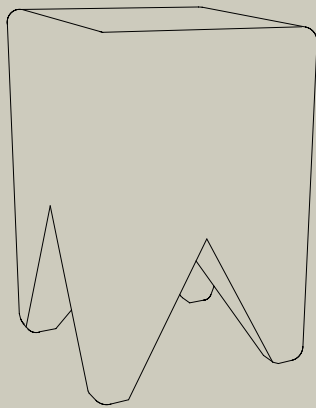
## Kalon

Stemming from a belief in the beauty and emotive power of everyday objects, Kalon seeks to deepen our relationship and reverence for the things we live with. Kalon's work maintains a strong point of view informed by American furniture traditions and modernist design, with a focus on elemental forms, natural materials, and versatility. The studio prides itself on its intense attention to materiality, which is at the core of each design. With a commitment to ecologically-conscious, regional production, Kalon partners with small teams of highly skilled, fairly paid craftspeople and uses the highest quality, locally sourced natural materials and finishes. By balancing traditional craft modalities with high-tech precision manufacturing and modern forms, Kalon invites a new chapter of contemporary, sustainable design. Kalon was founded in 2007 by Michaele Simmering and Johannes Pauwen and is based out of Los Angeles, California.

## Stump & Trunk

Cut from solid blocks of freshly cut domestic ash or maple, the surface of each Stump & Trunk design splits as it ages and dries, giving each piece a unique aesthetic spirit. Ring and heartwood details are actively preserved and featured on the seat. Like much of Kalon Studios' work, Stump and Trunk explores the playful relationship between the variation inherent to natural materials and the precision of contemporary design. Rendered in exceedingly simplified forms, the organic materiality of the wood is given primary focus. No finish has been applied to best allow the piece to develop a natural patina over time.





Stump \$ 125 - \$ 390

DIMENSIONS

S 8 W x 12 H x 8 D

L 8 W x 12 H x 8 D

ORIGIN

Made in Main

MATERIALS

American Ash

American Maple

STYLE OPTIONS

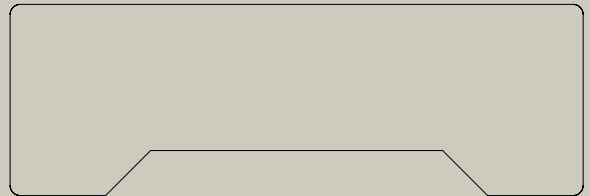
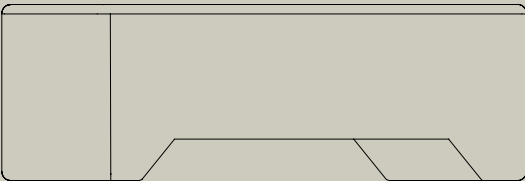


Small



Large

The Stump is cut from a solid block of freshly cut domestic ash or maple, the surface splits as it ages and dries, giving each piece a unique look. Ring and heartwood details have been preserved and featured on the seat. Like much of Kalon Studios' work, Stump explores the playful relationship between the inherent variations of natural materials and the precision of contemporary form. No finish has been applied to best allow the piece to develop a natural patina as it ages.



## Trunk \$ 295 - \$ 1,750

### DIMENSIONS

26 L x 8.5 W x 8.5 H

42 L x 14 W x 14 H

60 L x 14 W x 14 H

### ORIGIN

Made in Main

### MATERIALS

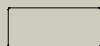
American Ash

American Maple

### STYLE OPTIONS



Small



42"



60"

The Trunk is cut from a solid block of freshly cut domestic ash or maple, the surface splits as it ages and dries, giving each piece a unique look. Ring and heartwood details have been preserved and featured on the ends. Like much of Kalon Studios' work, Trunk explores the playful relationship between the inherent variations of natural materials and the precision of contemporary form. No finish has been applied to best allow the piece to develop a natural patina as it ages.

Standard species:      Ash or Maple (Green Wood)  
Finishes:                Raw (Unfinished)

Custom dimensions, species and finishes available upon request.  
Estimated lead times and shipment: 1-3 weeks

# Stump & Trunk

The collection includes stumps and trunks in various sizes.

141-S



141-L



142-S



142-L  
142-L-60



## Beyond Beauty

---

Kalon (pronounced like ‘Talon’ but with a ‘K’) is an ancient, philosophical concept of ideal beauty that considers moral worth and usefulness as inextricable from aesthetics. When an object is kalon, it is beautiful because there is an inherent goodness that radiates from each detail. The truly beautiful is one and the same with the truly good.

Kalon Studios was founded not only to create products that stimulate and inspire, but to use design for positive change. It’s an inherently optimistic mission, and achieving it is no small feat. For us, it’s the seed of inspiration for every decision we make.



## The ways we work

---

### *Producing with intention*

We don't design to industry standards, we design and develop beyond them. Our pieces and materials meet some of the world's most stringent sustainability standards, but more importantly, they meet our high standards. Kalon views design as part of an ecosystem of impact: from those involved in creating work to the production choices we make, we consider the full picture. Each piece must give as much as it takes both to the environment and to the people involved in creating it.

### *Championing local craft*

Kalon follows a philosophy of local manufacturing. Lumber is sustainably harvested from forests most local to where pieces are made. Similarly, all packing materials are sourced locally. Our intent is to sustain and revitalize the businesses, communities, and woodworking traditions in our communities.

### *Minding our impact*

Our operations follow a small to Batch Size One production model. Within this approach, it is as efficient and cost effective to produce a single item as it is to produce a run of 1,000. In this way, we break from destructive cycles of mass production, overconsumption of resources, and wasteful overproduction. Additionally, every Kalon piece meets an extremely high standard of 90% material efficiency or more. Despite this already industry-leading example, we are continually redeveloping our manufacturing processes.