



Stump & Trunk

---

kalon











Large Stump - Maple





Large Stump - Maple



Large Stump - Maple









## Kalon

---

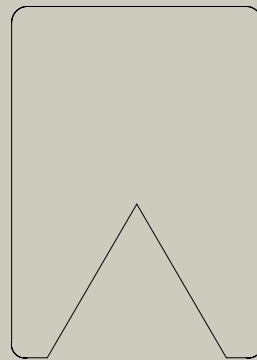
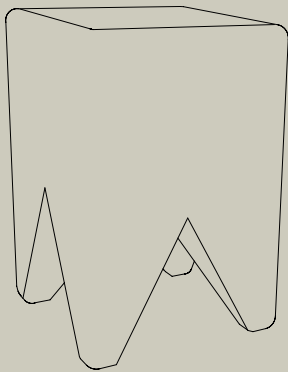
Stemming from a belief in the beauty and emotive power of everyday objects, Kalon seeks to deepen our relationship and reverence for the things we live with. Kalon's work maintains a strong point of view informed by American furniture traditions and modernist design, with a focus on elemental forms, natural materials, and versatility. The studio prides itself on its intense attention to materiality, which is at the core of each design. With a commitment to ecologically-conscious, regional production, Kalon partners with small teams of highly skilled, fairly paid craftspeople and uses the highest quality, locally sourced natural materials and finishes. By balancing traditional craft modalities with high-tech precision manufacturing and modern forms, Kalon invites a new chapter of contemporary, sustainable design. Kalon was founded in 2007 by Michaele Simmering and Johannes Pauwen and is based out of Los Angeles, California.

## Stump & Trunk

---

Cut from solid blocks of freshly cut domestic Ash or Maple, the surface of each Stump & Trunk design splits as it ages and dries, giving each piece a unique aesthetic spirit. Ring and heartwood details are actively preserved and featured on the seat. Like much of Kalon Studios' work, Stump and Trunk explores the playful relationship between the variation inherent to natural materials and the precision of contemporary design. Rendered in exceedingly simplified forms, the organic materiality of the wood is given primary focus. No finish has been applied to best allow the piece to develop a natural patina over time.





## Stump

### DIMENSIONS

S 8" W x 12" H x 8" D

L 8" W x 12" H x 12" D

### ORIGIN

Made in Maine

### MATERIALS

American Ash

American Maple

### STYLE OPTIONS

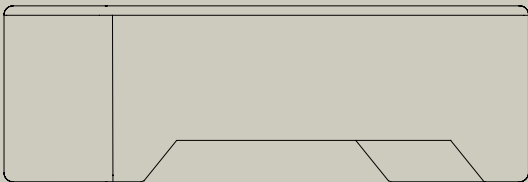


Small



Large

The Stump is cut from a solid block of freshly cut domestic Ash or Maple, the surface splits as it ages and dries, giving each piece a unique look. Ring and heartwood details have been preserved and featured on the seat. Like much of Kalon Studios' work, Stump explores the playful relationship between the inherent variations of natural materials and the precision of contemporary form. No finish has been applied to best allow the piece to develop a natural patina as it ages.



## Trunk

### DIMENSIONS

26" L x 8.5" W x 8.5" H

42" L x 14" W x 14" H

60" L x 14" W x 14" H

### ORIGIN

Made in Maine

### MATERIALS

American Ash

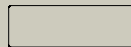
American Maple

### STYLE OPTIONS



Small

42"



60"

The Trunk is cut from a solid block of freshly cut domestic Ash or Maple, the surface splits as it ages and dries, giving each piece a unique look. Ring and heartwood details have been preserved and featured on the ends. Like much of Kalon Studios' work, Trunk explores the playful relationship between the inherent variations of natural materials and the precision of contemporary form. No finish has been applied to best allow the piece to develop a natural patina as it ages.



Standard species: Ash or Maple (Green Wood)  
Finishes: Raw (Unfinished)

# Stump & Trunk

Custom dimensions, species and finishes available upon request.  
Estimated lead times and shipment: 1-4 weeks

The collection includes stumps and trunks in various sizes.

141-S



141-L



142-S



142-L  
142-L-60



## Beyond Beauty

---

Kalon (pronounced like ‘Talon’ but with a ‘K’) is an ancient, philosophical concept of ideal beauty that considers moral worth and usefulness as inextricable from aesthetics. When an object is kalon, it is beautiful because there is an inherent goodness that radiates from each detail. The truly beautiful is one and the same with the truly good.

Kalon Studios was founded not only to create products that stimulate and inspire, but to use design for positive change. It’s an inherently optimistic mission, and achieving it is no small feat. For us, it’s the seed of inspiration for every decision we make.





## The ways we work

---

### **Our Design Commitments — Beyond Human-Centered Design**

The decisions we make have an ecosystem of impact that reverberates far beyond the acts of ideation and creation, and every choice is a chance to support something — or not support something. By knowing this, we can design with intention, and activate the political, social, and cultural aspects of our respective practices. This means that from design to production, each piece must be functional, long-lasting, and of the highest quality. Along the way, it must support local communities, uphold craft traditions, and reimagine how we all engage with material goods.

### *Producing with intention*

We don't design to industry standards, we design and develop beyond them. Our pieces and materials meet some of the world's most stringent sustainability standards, but more importantly, they meet our standards. The materials we work with are carefully selected for their unique qualities as well as their ability to grow more beautiful with age and use. This is no accident — the longer we love a piece, the more sustainable that purchase becomes. To that end, pieces are designed with flexibility of use, durability, and timeless appeal in mind. Rather than planned obsolescence, we design with planned longevity in mind. Our hope is that our work will adapt to our customers' ever-changing needs and tastes over the course of a lifetime. We choose to work with natural materials to ensure end-of-life bioavailability of our designs. We use safe, non-toxic materials that don't emit harmful VOCs or odors.

*Championing local craft*

As we work to find sustainable solutions to manufacturing, we engage many of the newest — and sometimes, the oldest — methods and materials. Our intent is to sustain and revitalize the businesses, communities and craft traditions most local to us. By choosing to work with small-scale, often family-owned FSC-certified manufacturers and small teams of highly skilled craftspeople, we are keeping vital economic diversity, jobs, and skills in our communities. By bringing our approach to these manufacturers, we expand the industrial commons while amplifying our impact.

*Minding our impact*

We follow a philosophy of local manufacturing, harvesting lumber from the forests most local to where our pieces are made. Sustainable forestry practices, centering on domestic hardwoods, ensure that forests managed for the production of wood products contribute to healthy ecosystems. We use a Batch Size One production model, where it is as efficient and cost effective to produce a single item as it is to produce a run of 1,000. In this way, we break from the destructive cycles of mass production, overconsumption of resources, and wasteful overproduction. Additionally, every Kalon piece meets an extremely high standard of 90% material efficiency or more. Despite this already industry-leading example, we are continually redeveloping our manufacturing process to create less waste.