



Kalon x Reath

kalon



Kalon x Reath Collection



Kalon x Reath - Rugosa Sofa



Kalon x Reath - Rugosa Sofa



Kalon x Reath Rugosa Daybed



Kalon x Reath Collection Detail





Kalon x Reath - Rugosa Chair

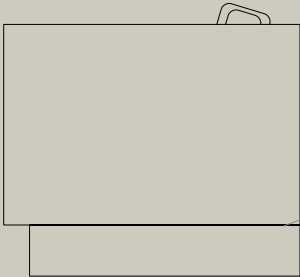


The Kalon x Reath Collection

Released in 2020, the Rugosa Collection is the synthesis of a many years' conversation exploring the evolving function and spirit of the living room. Inspired by the Narragansett home from which the collection takes its name, Rugosa was designed to invite comfort — both communal and solitary.

Two years later, the collaboration with fellow LA-based design studio, Reath Design, looked to this original seed of inspiration to present a brand new limited release of custom upholstery for the Rugosa Sofa, Rugosa Daybed, and Rugosa Chair.

Drawing from the vast catalogs of Alexander Girard, Rose Cumming, and the Warner Textile Archive, the Kalon x Reath Rugosa Collection pushes the limits of juxtaposition and harmony. Against a backdrop of clean-lined Modernist forms, the textile selection of florals, stripes, and checks sings, injecting an undeniably eccentric, nostalgic flair to Kalon's designs. Departing from the oft-austere impulse of minimalism, these exuberant pieces evoke a bold generosity of spirit and mood of lived-in creativity.



The Kalon x Reath Rugosa Sofa

DIMENSIONS

86.5" L x 35" W x 30" H

ORIGIN

Made in Los Angeles

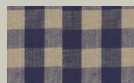
MATERIALS

Sugar Pine
Down/Feather Fill

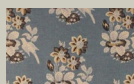
TEXTILE SELECTION



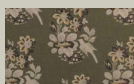
Flora
Chocolate



Sonoma
Check Indigo



Macclesfield
Blue

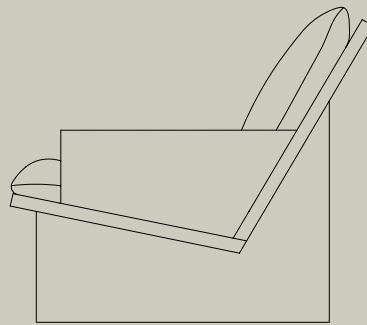
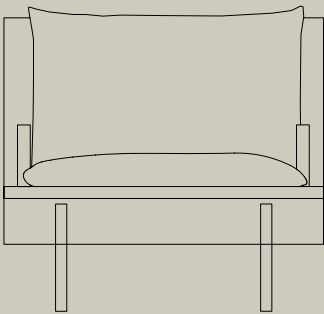


Macclesfield
Green



Toostripe
Ochre

The Kalon x Reath Rugosa Sofa is made from broad planks of Sugar Pine and upholstered in a textile selection of florals, stripes, and checks. Drawing from the vast catalogs of Alexander Girard, Rose Cumming, and the Warner Textile Archive, the Kalon x Reath Rugosa Collection pushes the limits of juxtaposition and harmony.



The Kalon x Reath Rugosa Chair

DIMENSIONS

34.5" L x 31" W x 30" H

ORIGIN

Made in Los Angeles

MATERIALS

Sugar Pine
Down/Feather Fill

TEXTILE SELECTION



Macclesfield
Walnut

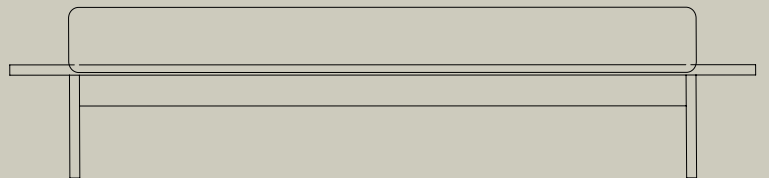
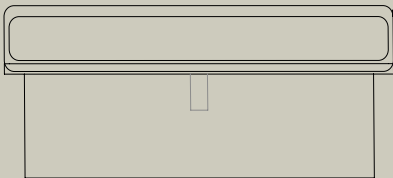


Chequer-
board Stitch



Toostripe
Ochre

The Kalon x Reath Rugosa Chair is made from broad planks of Sugar Pine and upholstered in a textile selection of florals, stripes, and checks. Drawing from the vast catalogs of Alexander Girard, Rose Cumming, and the Warner Textile Archive, the Kalon x Reath Rugosa Collection pushes the limits of juxtaposition and harmony.



The Kalon x Reath Rugosa Daybed

DIMENSIONS

75" L x 39" W x 17" H

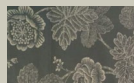
ORIGIN

Made in Los Angeles

MATERIALS

Sugar Pine
Down/Feather Fill

TEXTILE SELECTION



Flora - Slate



Toostripe
Ochre

The Kalon x Reath Rugosa Daybed is made from broad planks of Sugar Pine and upholstered in a textile selection of ochre stripes accented by delicate slate florals. Drawing from the vast catalogs of Alexander Girard, Rose Cumming, and the Warner Textile Archive, the Kalon x Reath Rugosa Collection pushes the limits of juxtaposition and harmony.

Standard species:	Sugar Pine (US) / Nordic Pine (EU)
Finishes:	Kalon Bare Finish or Natural Oil/Wax
Standard Fabrics:	Linen / Cotton / Wool

Kalon x Reath Rugosa Collection

Estimated lead times and shipment: 8-10 weeks

The collection includes a sofa, armchair and daybed.

KXR-510



KXR-510



KXR-512



KXR-512



KXR-511



Beyond Beauty

Kalon (pronounced like ‘Talon’ but with a ‘K’) is an ancient, philosophical concept of ideal beauty that considers moral worth and usefulness as inextricable from aesthetics. When an object is kalon, it is beautiful because there is an inherent goodness that radiates from each detail. The truly beautiful is one and the same with the truly good.

Kalon Studios was founded not only to create products that stimulate and inspire, but to use design for positive change. It’s an inherently optimistic mission, and achieving it is no small feat. For us, it’s the seed of inspiration for every decision we make.



The ways we work

Our Design Commitments — Beyond Human-Centered Design

The decisions we make have an ecosystem of impact that reverberates far beyond the acts of ideation and creation, and every choice is a chance to support something — or not support something. By knowing this, we can design with intention, and activate the political, social, and cultural aspects of our respective practices. This means that from design to production, each piece must be functional, long-lasting, and of the highest quality. Along the way, it must support local communities, uphold craft traditions, and reimagine how we all engage with material goods.

Producing with intention

We don't design to industry standards, we design and develop beyond them. Our pieces and materials meet some of the world's most stringent sustainability standards, but more importantly, they meet our standards. The materials we work with are carefully selected for their unique qualities as well as their ability to grow more beautiful with age and use. This is no accident — the longer we love a piece, the more sustainable that purchase becomes. To that end, pieces are designed with flexibility of use, durability, and timeless appeal in mind. Rather than planned obsolescence, we design with planned longevity in mind. Our hope is that our work will adapt to our customers' ever-changing needs and tastes over the course of a lifetime. We choose to work with natural materials to ensure end-of-life bioavailability of our designs. We use safe, non-toxic materials that don't emit harmful VOCs or odors.

Championing local craft

As we work to find sustainable solutions to manufacturing, we engage many of the newest — and sometimes, the oldest — methods and materials. Our intent is to sustain and revitalize the businesses, communities and craft traditions most local to us. By choosing to work with small-scale, often family-owned FSC-certified manufacturers and small teams of highly skilled craftspeople, we are keeping vital economic diversity, jobs, and skills in our communities. By bringing our approach to these manufacturers, we expand the industrial commons while amplifying our impact.

Minding our impact

We follow a philosophy of local manufacturing, harvesting lumber from the forests most local to where our pieces are made. Sustainable forestry practices, centering on domestic hardwoods, ensure that forests managed for the production of wood products contribute to healthy ecosystems. We use a Batch Size One production model, where it is as efficient and cost effective to produce a single item as it is to produce a run of 1,000. In this way, we break from the destructive cycles of mass production, overconsumption of resources, and wasteful overproduction. Additionally, every Kalon piece meets an extremely high standard of 90% material efficiency or more. Despite this already industry-leading example, we are continually redeveloping our manufacturing process to create less waste.